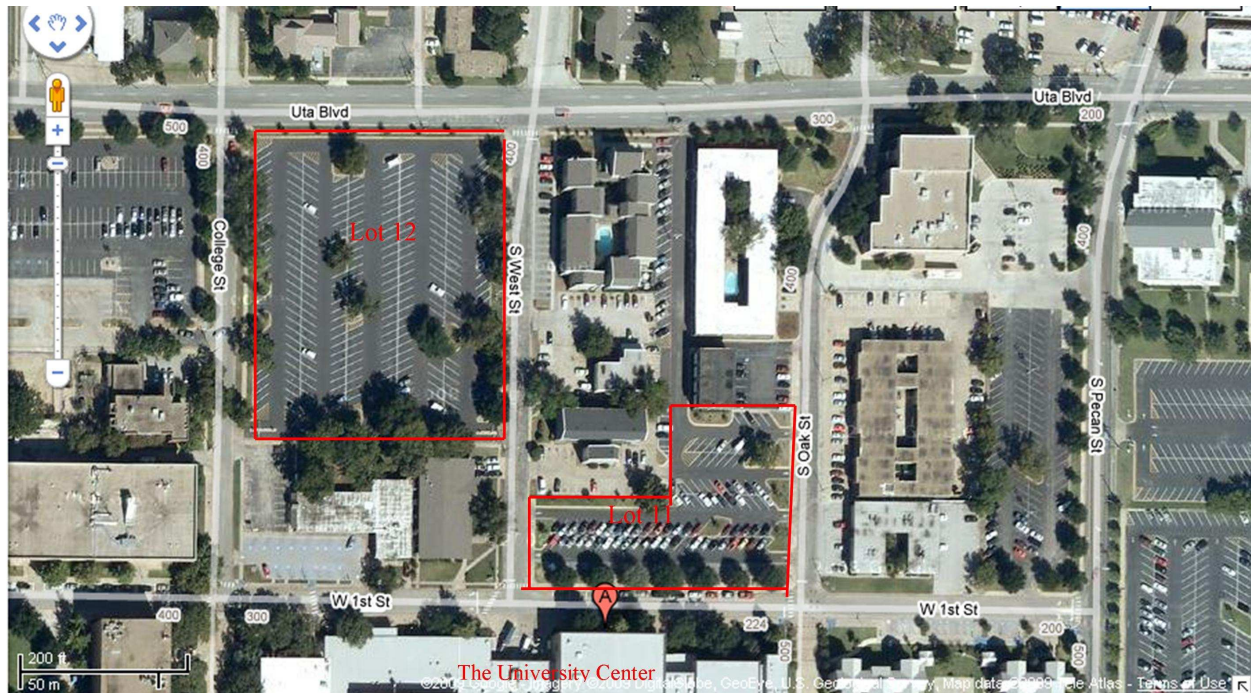


Parking Lot:



Directions:

From I-30

Exit Cooper St. (Exit 27) and turn right onto Lamar St. (If coming from I-30W)

Turn right (south) onto N. Cooper St. at the traffic light

Travel southbound until reaching UTA Blvd. (about 2.5 miles)

Turn left on UTA Blvd. and travel approximately 4 blocks until S. West St.

Turn right on S. West St. and Lot 12 will be on your right and Lot 11 further down on your left.

The University center will be directly in front of you.

From 1-20

Exit I-20 at Cooper St. North (Exit 449/449A)

Travel North on Cooper Street approximately 4 miles to UT Arlington

Turn right on UTA Blvd. and travel approximately 4 blocks until S. West St.

Turn right on S. West St. and Lots 12 will be on your right and Lot 11 on your left.

The University center will be directly in front of you.

From 360 South

Exit Division St and merge onto Watson Road

Turn slight right on Watson Road, this will merge into Division St.

Head west on E. Division until N. West St. (about 2.7 miles)

Turn left on N. West St. (look for the Rent-a-Tire store)

Continue south past Abram St. until reaching the UTA campus
Lot 12 will be on your right and Lot 11 further down on your left.

West St. will stop directly in front of The University Center

From 360 North

Exit Division St

Head west on E. Division until N. West St. (about 2.9 miles)

Turn left on N. West St. (look for the Rent-a-Tire store)

Continue south past Abram St. until reaching the UTA campus

Lot 12 will be on your right and Lot 11 further down on your left.

West St. will stop directly in front of The University Center

University Center Operations Center:

PH: (817) 272-2929